

HAMILTON ISLANDS

DESIGN RODOLFO DORDONI

Hamilton Islands is designed to be the natural offshoot of the Hamilton seating system and compared to the original project, comprises a combination of elements that can remain separate or be put alongside each other to obtain out-of-the-ordinary arrangements.

The arrangement depicted is just one example of the many different compositions possible with our seating systems. We suggest that you contact the nearest Minotti dealer to explore the options most suited to your needs and select the upholstery of your choice from the exclusive Minotti collection.



HAMILTON ISLANDS — arrangement 04



SOFA ARRANGEMENT

- 1 **HAMILTON ISLANDS**
ELEMENT WITH 1 ARMREST SX
CM 157X104 H78
- 2 **HAMILTON ISLANDS**
ISLE ELEMENT DX
CM 157X104 H78

FURNISHING ACCESSORIES

- 3 **GLOVER**
ARMCHIAR CM 95X93 H76
- 4 **BELLAGIO "BLACK-NICKEL"**
COFFEE TABLE Ø CM 49 H42
- 5 **DAVIS**
OTTOMAN Ø CM 89 H27
- 6 **SULLIVAN**
COFFEE TABLE CM 205X70 H31
- 7 **HAMILTON TRAY**
TRAY CM 80X30
- 8 **MATT DIBBETS**
RUG CM 400X300

Furnishing accessories



3
GLOVER
ARMCHAIR CM 95X93 H76



4
BELLAGIO "BLACK-NICKEL"
COFFEE TABLE Ø CM 49 H42



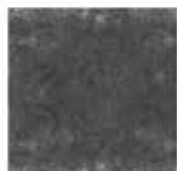
5
DAVIS
OTTOMAN Ø CM 89 H27



6
SULLIVAN
COFFEE TABLE CM 205X72 H31



7
HAMILTON TRAY
TRAY CM 180X50



8
MATT DIBBETS
RUG CM 400X300

Settings

